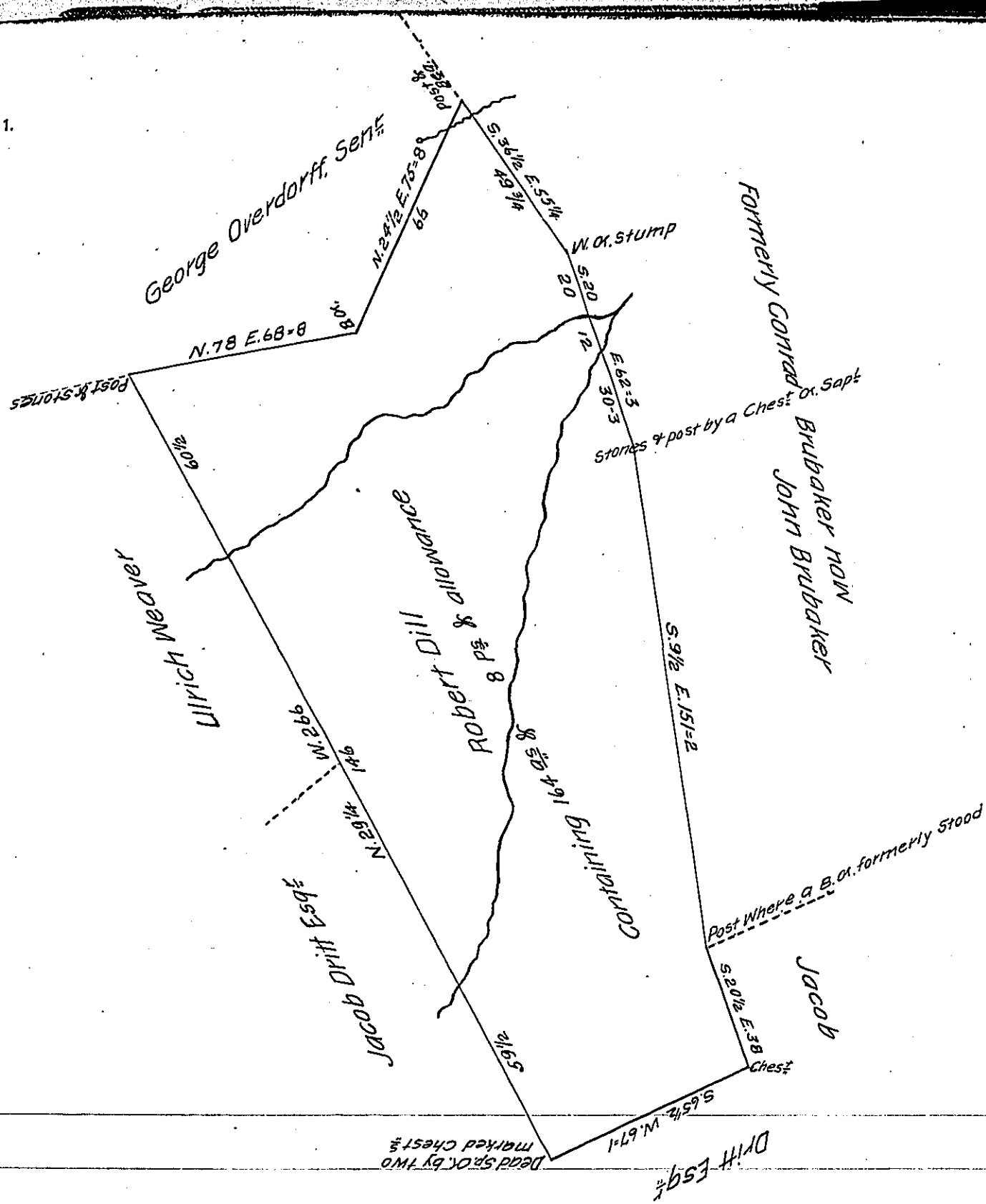


FORM NO. 1.



Situate in Windsobli township in the County of (Obi.)k containing (Obi.)  
 above set forth One Hundred and Sixty-four Acres and eight perches & allowance,  
 Being the same land which was originally surveyed to Charles Lukens, in pursuance  
 of the application No. 1145 for 150 <sup>ac</sup> granted to Robert Dill bearing date the 8<sup>th</sup> day  
 of September A. D. 1766. Resurveyed by the old lines on the 26<sup>th</sup> day of Sep-  
 tember 1811, for John Leephart the present owner, who desired me to return  
 the same for Confirmation. Per

Jacob Spangler, D. S.

To Andrew Porter, Esq

Surveyor General

Lancaster, Pa.

IN TESTIMONY that the above is a copy of the original remaining on file in  
 the Department of Internal Affairs of Pennsylvania, made  
 conformably to an Act of Assembly approved the 16th day of  
 February 1833, I have hereunto set my hand and caused  
 the Seal of said Department to be affixed at Harrisburg,  
 this third day of September, 1907

*Henry Houck*  
 Secretary of Internal Affairs.